



December 7, 2020

Dear Phoenix Christian Family,

Health Protocol Enforcement

As the final days of the semester approach, Phoenix Christian is pursuing consistent enforcement of health protocols. It is no secret ongoing mask and distancing requirements are a particular challenge for students and adults. However, each day our students and our staff are reminded and directed to honor our stated procedures.

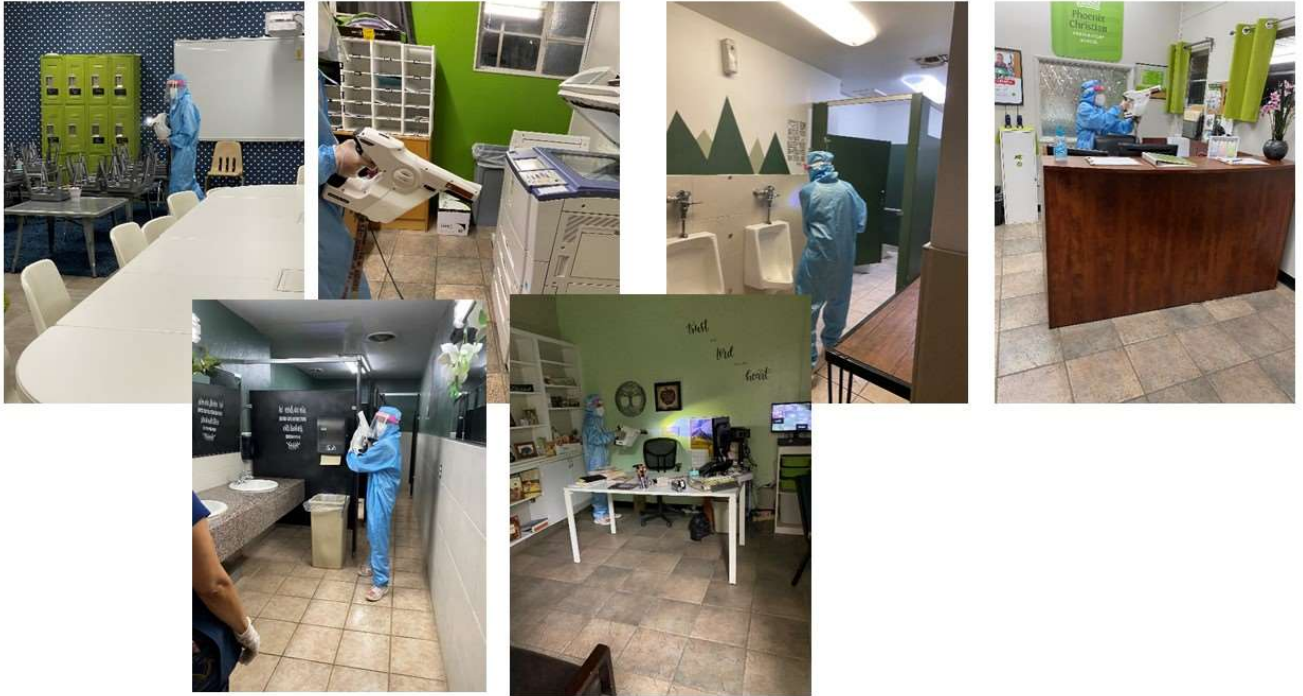
We are committed to on campus instruction which includes continual examination and adjustment of policy enforcement. Administration is responding with a firmer approach to student and adult accountability.

For our students, we remain committed to a non-punitive approach to mask requirements, but the privilege of on campus instruction may be halted.

If a student, after repeated reminders (including parental communication), refuses to wear a mask, the student will transition to Homebased Learning for a time prescribed by the administration.

Campus Cleaning

Phoenix Christian remains committed to robust cleaning and care of our campus. When prescribed, Certified Covid-19 cleaning of our educational spaces is completed by CleanNet.



Communication

As is our practice, we will communicate if on campus or any school event exposure occurs.

Homebased Learning

Please remember Homebased Learning is only available to students when prescribed by the administration. Homebased Learning is not an option for students to occasionally choose when he or she does not want to come to school. Approved Homebased Learners are documented on a pre-approved list with the administration.

For current Homebased Learning students, Homebased Learning will be extended for the first quarter of the Spring 2021 Semester (January 5-February 12, 2021). Parents with Homebased Learners must submit a request for Homebased Learning extension to the respective Principal.

Final Exams

For middle school and high school students, final exams (December 16th, 17th, and 18th) must be taken on campus. Further details were recently provided and will be communicated again this week. Please be watching for further communication from Principal Graden.

Next Steps and Protocol

We will continue health screening protocol during student drop off after the Christmas Break. Phoenix Christian's Covid-19 Team meets weekly and examines data 4-5X throughout the week. Your input is also highly valuable.

As always, we encourage you to monitor your student's health and contact Phoenix Christian immediately with any concern. Our parents have been incredible communicators throughout this entire season.

We continue to partner directly with the Maricopa County Department of Health (MCDH) who defines specific criterion for "exposure." Specifically, *exposure* criterion is met when an individual (masked or unmasked) enters into contact (less than 6 feet) for a cumulative time of 15 minutes within a 24-hour period, with an individual who is contagious. An individual can be contagious up to 2 days prior to symptoms.

According to the (MCDH), an individual who is potentially exposed, needs to self-isolate for a minimum of 10 days OR receive a negative Covid-19 test result. If the individual tests negative, they may return to school/work if they wear a mask and maintain physical distancing.

On a procedural reminder, a VERY LIMITED number of staff unable to wear a mask for medical reasons. In such case, specific procedures are in place and closely monitored.

Thank you for continuing our Christ centered pursuit to protect our children by wearing masks and honoring health protocols while on the Phoenix Christian campus.

If you have any questions or concerns, please feel free to reach out to me personally (602) 265-4707 ext. 226.

With prayer,

A handwritten signature in black ink that reads "JEFF BLAKE". The letters are stylized and connected, with a large, sweeping flourish under the "B".

Phoenix Christian Preparatory School